

OS OPEN DATA

SIMPLY REMOVING THE
PRICE TAG DOESN'T
CREATE USEFUL OPEN
DATA

Peter ter Haar

Director of Products and Innovation

THE DEMAND FOR GEOSPATIAL OPEN DATA IN UK

The growth in Open Data published by UK government continues to accelerate, and Ordnance Survey has recognised the opportunity to underpin this with high quality and maintained geospatial data

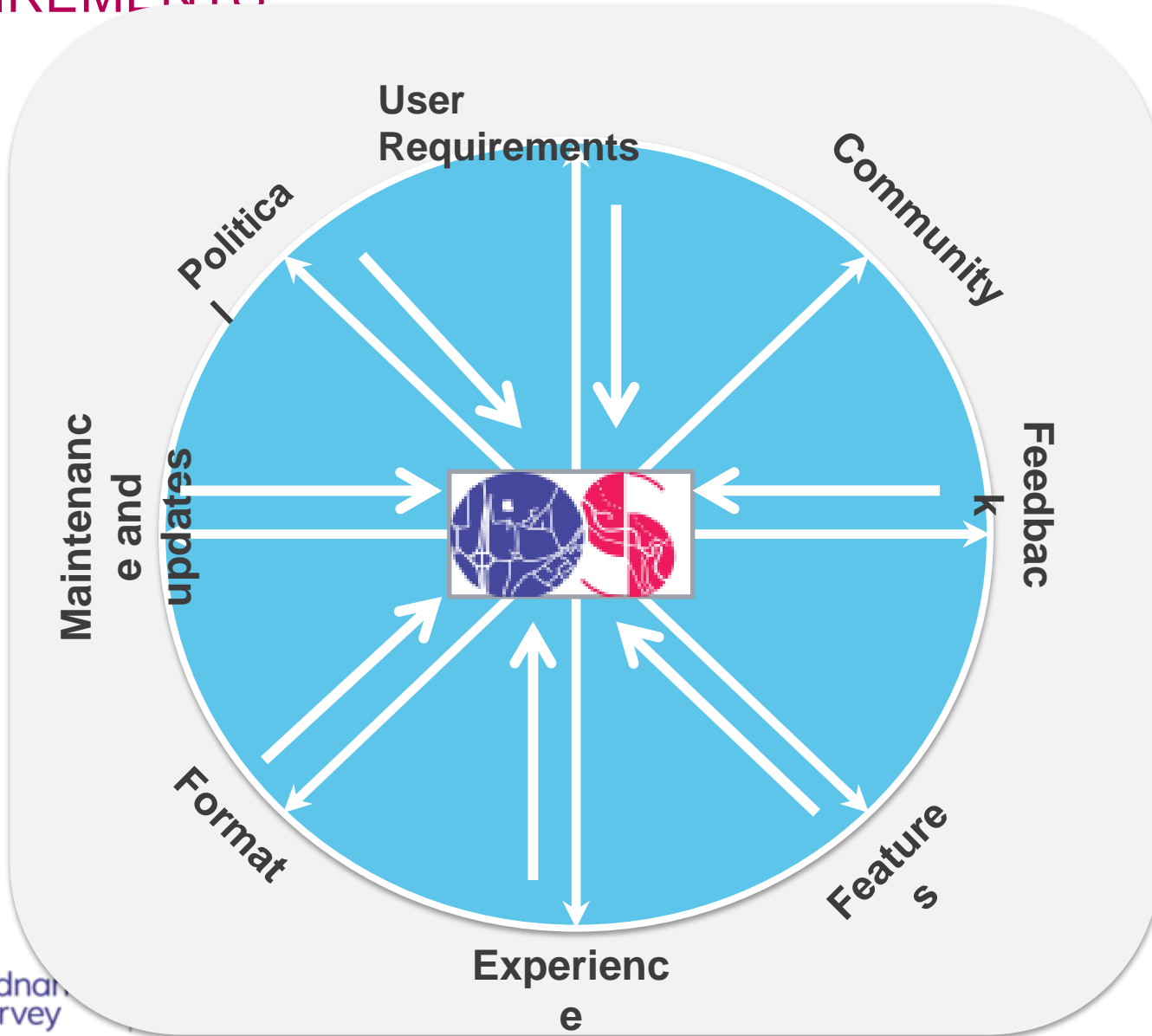
- However, this is not as simple as removing the price from existing products
- Authority in maintained geospatial data is recognised and valued by end users
- Reaching out and engaging with new users to ensure the design and creation of high quality and useful open data is paramount
- Aim to achieve increased value to a broader range of stakeholders including all of those who champion policy, economic or societal benefits.

MAKING STEPS IN THE RIGHT DIRECTION

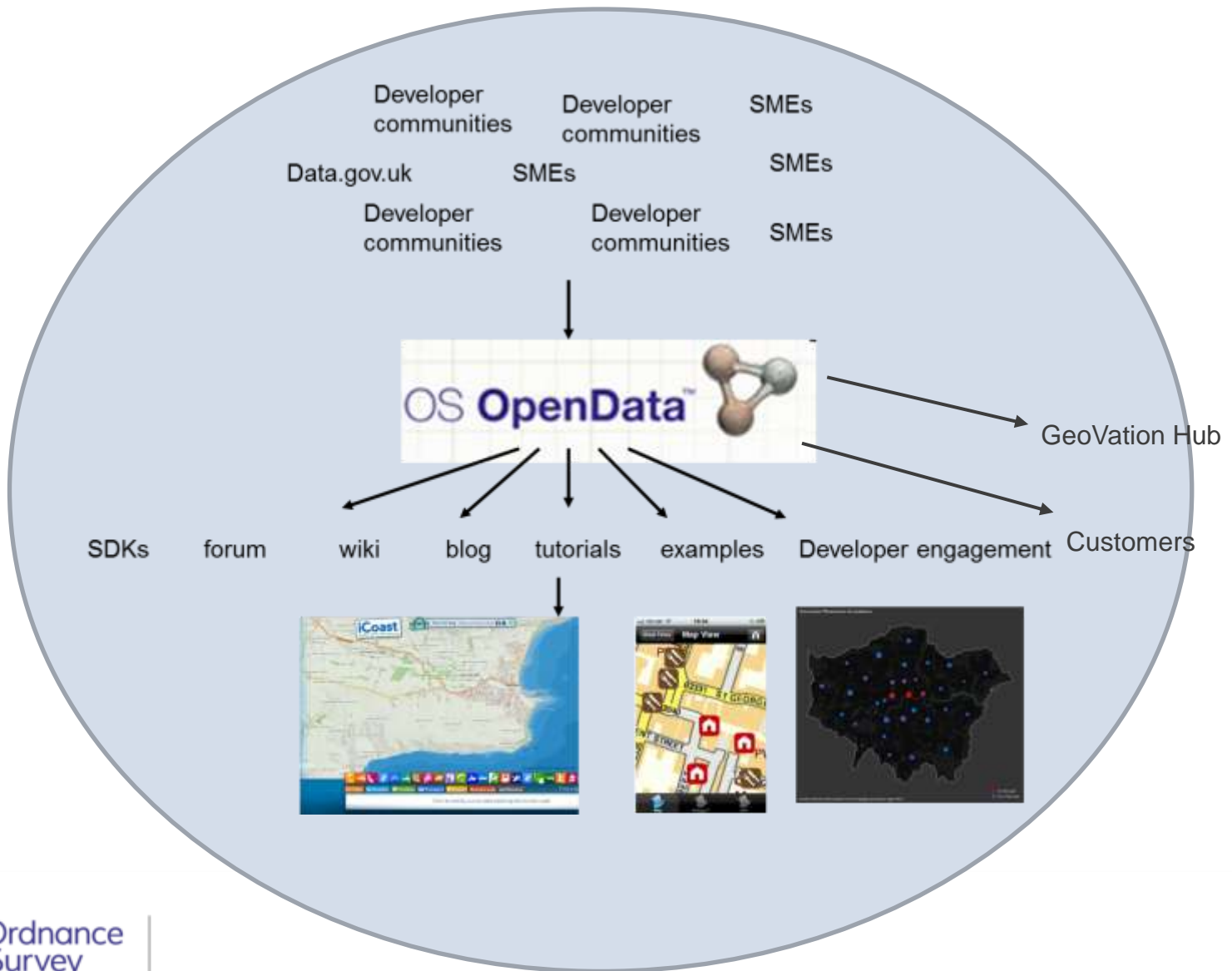
Making data open is just the first step to making an impression on a journey



STAKEHOLDER ENGAGEMENT AND USER REQUIREMENTS



BUILDING AN OPENDATA ECOSYSTEM

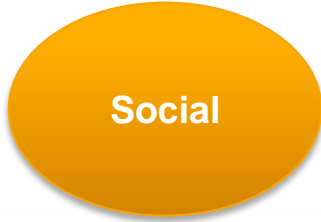


LISTENING AND MEETING CUSTOMER NEEDS

GIS

Developers

Citizens





OVER 1 MILLION OS OPENDATA ORDERS

2010
OS
OpenDat
a
Launches

2010 - 2015

March 2015
OS release 4 New
OS OpenData
Products

OS PRODUCTS AND SERVICES:

TOPOGRAPHY & HEIGHT

- OS MasterMap® Topography Layer
- OS MasterMap® Sites data
- OS MasterMap® Building Heights - Alpha
- Terrain® 5
- Terrain® 50
- OS MasterMap® Imagery Layer

LOCATION ANALYTICS

- AddressBase®
- AddressBase® Plus
- AddressBase® Premium
- Points of Interest
- Code-Point® and Code-Point® Open
- Code-Point® with polygons
- Boundary-Line™
- 1:50 000 Scale Gazetteer
- OS Locator™
- OS Net®
- OS Open Names

NETWORKS ANALYTICS

- OS MasterMap® Integrated Transport Network™ Layer
- OS MasterMap® Water Layer Network
- OS Open Rivers
- OS Open Roads

CONTEXTUAL MAPPING

- OS VectorMap® Local
- OS VectorMap® District
- OS Open Map - Local
- OS Street View®
- 1:25 000 Scale Colour Raster
- 1:50 000 Scale Colour Raster
- 1:250 000 Scale Colour Raster
- MiniScale®
- Strategi®
- Meridian™ 2

WEB SERVICES

- OS OpenSpace®
- OS OpenSpace® Pro
- OS OnDemand
- OS Places

 = Available for free through OS OpenData



RECENT OS DEVELOPMENTS

OS Open Map - Local **BETA**



A new 'street level' vector dataset designed as an effective backdrop for integrating and visualising other analytical open data.

OS Open River **BETA**



A generalised network enabled product delivering a national view of Great Britain's rivers.

OS Open Road **BETA**

Na



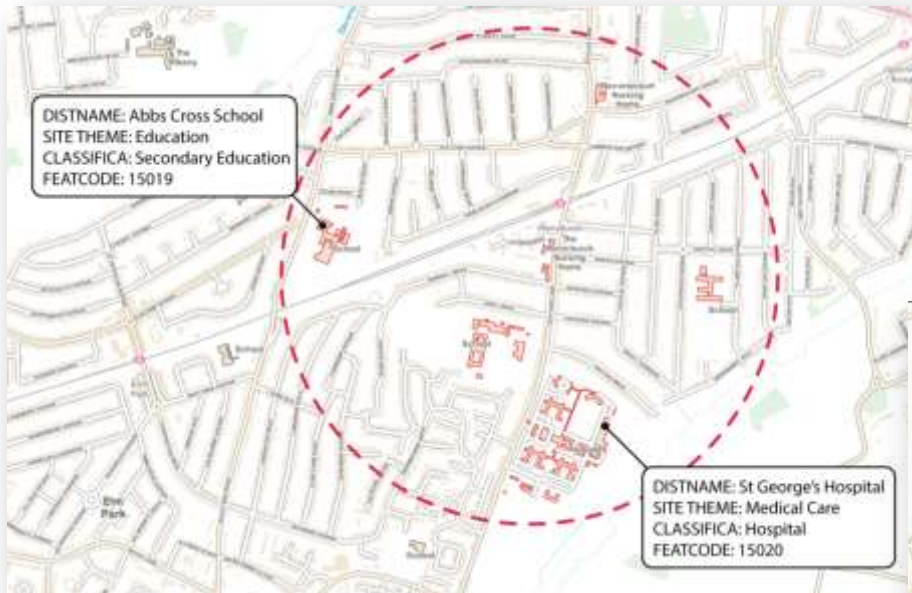
A generalised road network product delivering a national view of Great Britain's road network.

OS Open **BETA**



A significant upgrade to our legacy gazetteer products for use in location searches on both mobile and web.

MORE THAN 'MAPPING'



From simply mapping to enabling analysis and queries on the data

A principal focus on provision of network information and improved searching by place



NOT JUST OPEN 'DATA'



OS OpenSpace Boundaries

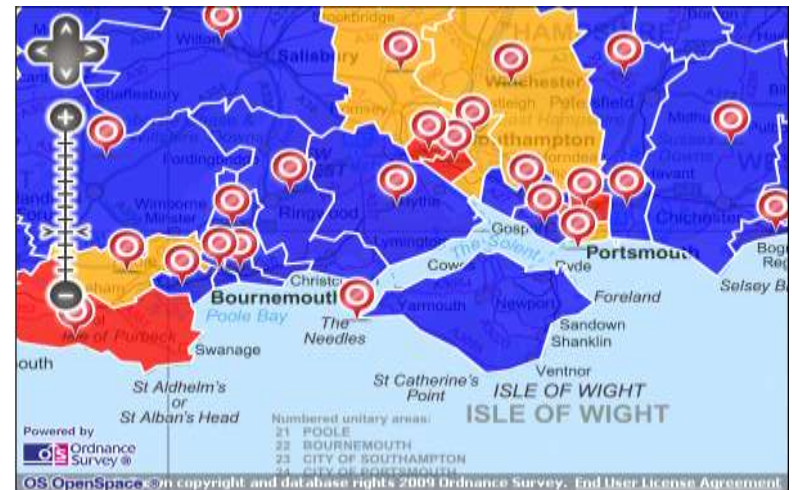
- Simplified version of Boundaryline
- GeoJSON

1:50 000 Scale Gazetteer

- Place names
- Map centre function

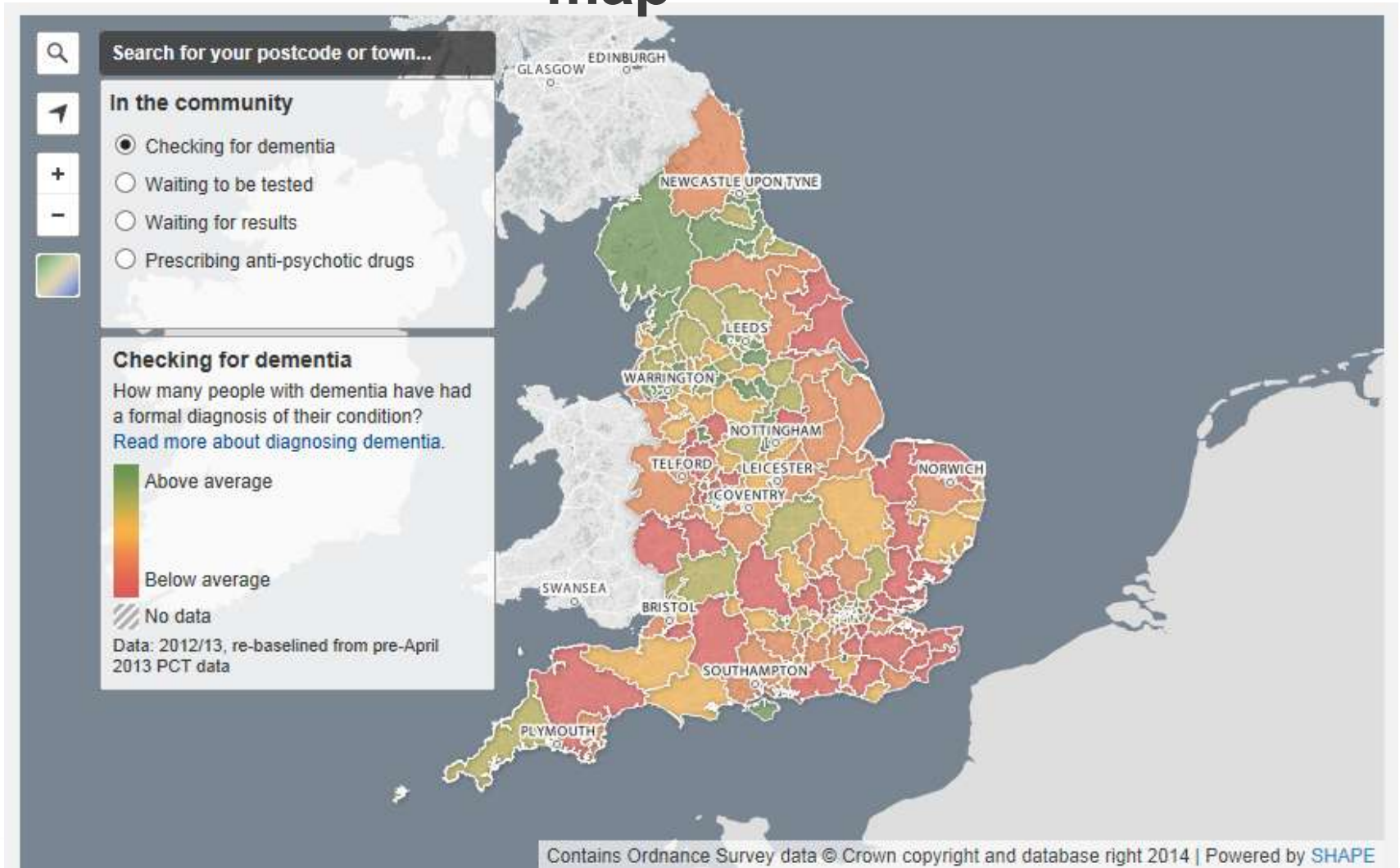
Codepoint Open

- Postcode lookup service
- Map centre

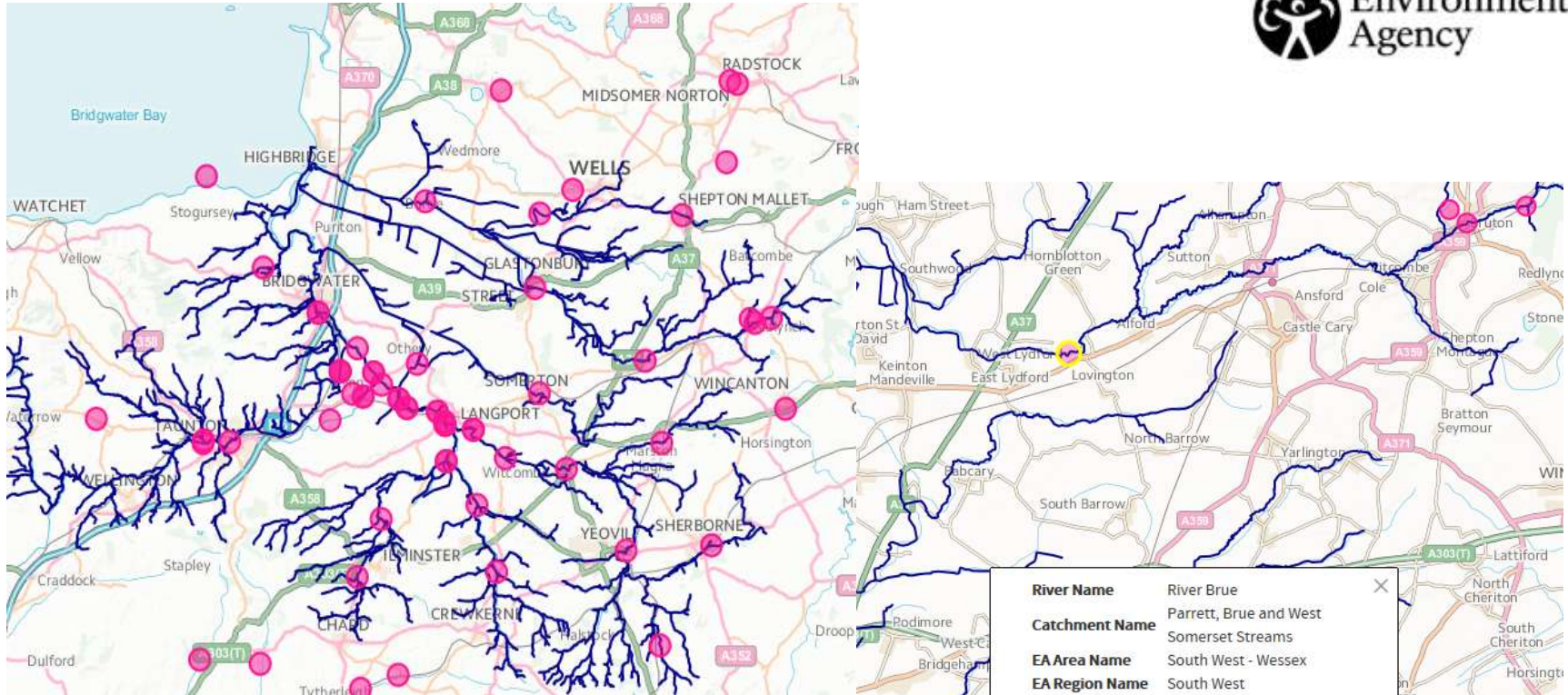




Putting dementia on the map



Flood Modelling using OS Open Rivers and EA Flood Data API



River Name	River Brue
Catchment Name	Parrett, Brue and West Somerset Streams
EA Area Name	South West - Wessex
EA Region Name	South West
Label	Lovington
Type of Measure	Water Level
Latest Reading	0.178
Reading Taken	2015-03-24T04:15:00Z
Max on Record	4.451
Date of Max	1979-05-30T19:15:00
Min on Record	0.03
Date of Min	1977-08-24T12:50:06
Typical Range	1.9 - 0.078



future city | glasgow



ALLOTMENTS

There are 26 allotment sites within Glasgow.

GIVE BIKES A CHANCE

Could you leave the car and cycle, even just once a week?

CREDIT UNIONS

Glasgow has more credit union members than any other UK city

HEALTH WALKS

For free and friendly local walks, some fresh air and a vital dose of vitamin D

CCTV CAMERAS

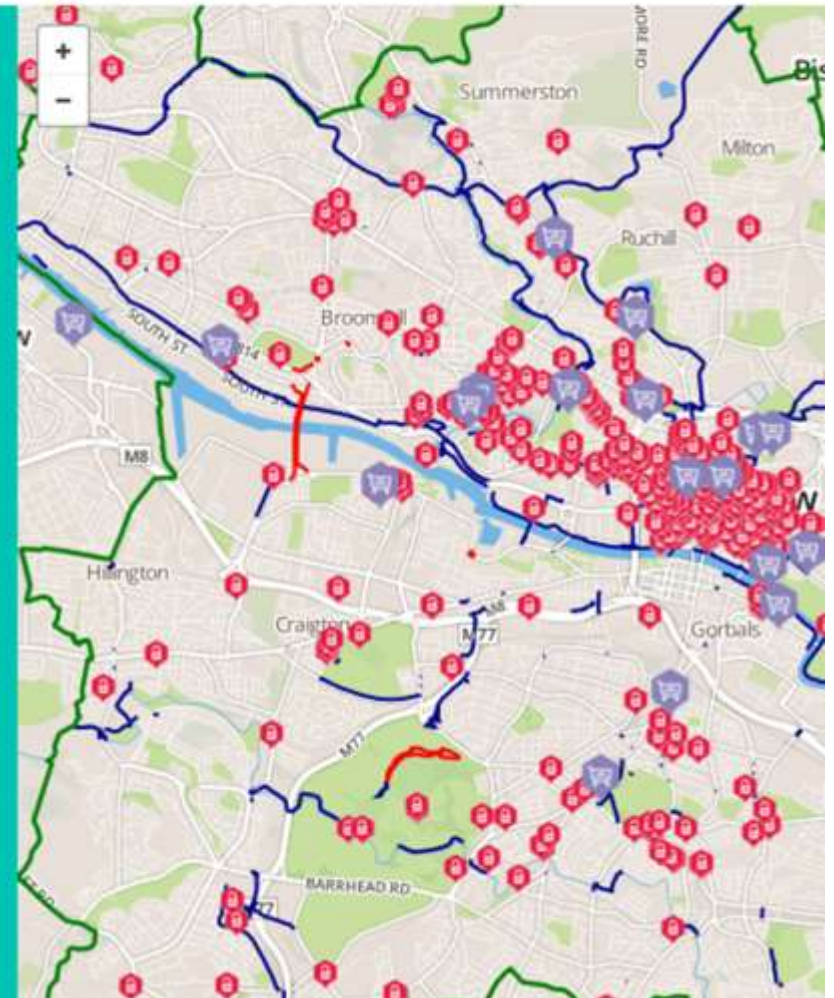
The locations of CCTV cameras in Glasgow

GIVE BIKES A CHANCE

Could you leave the car and cycle, even just once a week?

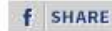
Go places, beat the traffic, get some exercise and help the city move. Find Glasgow's cycle routes, bike parks, bike-friendly schools...

This map is only the beginning of a more cycle-friendly city. Find the cycle routes and the places where to park your bike securely.



WELCOME TO OS OPENDATA

OS OpenData



Get started with free digital map data

We offer 12 quality assured, regularly updated products that enable you to analyse your data, build interactive websites and create stunning visuals – and they're all free. All we ask is an acknowledgement.

OS OpenData can be combined with other open datasets available from a variety of sources. Many organisations and individuals have already done just that to create a diverse range of innovative applications – could yours be next?

What's available



From a map of Britain, OS OpenData products take you right down to street level. They encompass

View maps



Look at maps of Great Britain using OS OpenData products; you can zoom right in to street level and

Been here before?

If you already know what you want, get your free data today as either a download or DVD.

[Order now](#)

OS OpenSpace



Using the OS OpenSpace API, you can embed and annotate our maps for free on your

OS OpenData™ Masterclasses



The classes typically attract: -

- Developers
- Community groups
- Social entrepreneurs
- Commercial (large, SME's & individuals)
- Government organisations (PSMA members) – from Parish Councils to Central Government

A screenshot of a social media post. On the left, there is a calendar icon showing the date '19 SEP 2014'. To the right of the date, the text reads 'Sign up for our free OS OpenData masterclasses'. Below this, there are icons for a folder, a person, and a speech bubble, followed by the text 'Geovation, opendata / Luke / 1 /'. Below that, there is a folder icon and the text 'Geo.events, OS OpenData'. At the bottom left, there is a heart icon with the number '0' below it. The main text of the post reads: 'Last week we launched the latest GeoVation Challenge in partnership with Land Registry, asking for solutions on 'How can we enable people in Britain to live in better places?' We are looking for great ideas which use geography, technology and good design with

“This was an excellent master class. The staff were knowledgeable, and helpful. The quality of the support materials was also excellent”

OS OpenSpace showcase

Have a look at some applications that have been developed and websites that use the OS OpenSpace® API.

Want to feature in our showcase? It's simple, just [submit your project](#).

If you have an idea for an application using the OS OpenSpace API, [register](#) for a key or [contact us](#).



Ducklington Parish Council



Angling Research in Assynt



AditNow Mining Exploration



Classic Cottages



Mountain bike rides



OutSide Maps



Hill Bagging



Pedalnorth.com



DOWN WITH THE KIDS!





BRITAIN'S PIONEERING LOCATION DATA LAB

Imagine. Explore. Discover. Create.

WHERE DID IT COME FROM?

- GeoVation, an initiative to support Open Innovation
- a proven model for stimulating collaboration and enabling start-ups
- social issue focus

2652 participants. 673 ideas. 7 GeoVation camps. 31 start-ups. £718,000 in funding.



WHAT'S BEHIND IT?

- acts as a catalyst for the growth of the UK GI Economy
- a shared purpose of geo-centric innovation
- development of associated capability & capacity
- supported access to OS Open Data

enable. stimulate. grow.



WHO IS IT FOR?

MAKERS

(developers)*

- 39% are in the 35–45 age group
- 88% are men
- are stable: 75% in the same role for 5+ years

THINKERS

(innovators)**

- share 5 common 'discovery' skills:
question the norm, observe, experiment to promote insight, connect the unconnected, network for knowledge

SHAKERS

(entrepreneurs)***

- 65% are over 30 years of age
- have technical + business degrees
- are restless: < 2.5 years in the same role



* Media Report: Developer Study 2015

** The Innovator's DNA - 2015

*** LinkedIn Report - 2011

GEOVATION HUB
the space

GEOVATION PROGRAMME
the accelerator

GEOVATION CHALLENGE
the opportunity



Collaborate, exchange ideas,
innovate and **be inspired** by
access to world-leading
geospatial data

WHAT DOES THE HUB OFFER?

enable –

- access OS data, API's and developer expertise
- network with the like-minded and undertake Open Innovation
- share knowledge, develop insight and pursue geospatial-centric innovation
- make use of shared spaces, private rooms, and secure storage

with –

- hot-desks, dedicated workspaces and flexible work spaces for meet-ups & scrums
- free Wi-Fi and printing
- theatre, workshop, boardroom and demo spaces available to book
- tea, coffee and kitchen facilities

and –

- it's cool. and free ... for individuals

The accelerator **Programme** at
the Geovation Hub supports
and rewards
entrepreneurship, innovation
and **creativity**

Q & A

Peter ter Haar
peter.terhaar@os.uk